

Jain Oval Hose

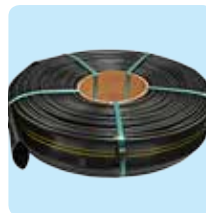
High Performance PE Hose



Features & Benefits

Quality Comes First

Each batch passes through stringent quality tests as per ASAE standard to ensure efficient and trouble free performance for long period.

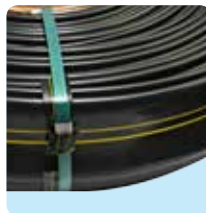


Freight Saver and Portable

Oval shape reduces freight and storage cost.

Quality Comes First

Each batch passes through stringent quality tests as per ASAE standard to ensure efficient and trouble free performance for long period.

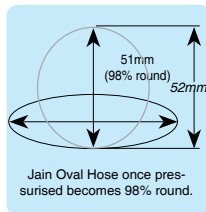
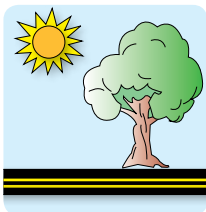


Choice of Selection

Available in wide range of diameters 10 mm to 151 mm, working pressure ranges : 1.13 to 2.9 kg/cm²

No Environmental Effects

UV stabilised tubing does not have any environmental effects. .



Oval to Round

Jain Oval Hose once pressurised becomes 98% round.

Jain Oval Hose

Additional Features

- Each batch is tested for the following parameters:
 - Dimensional tolerances.
 - Short term & long term hydraulic pressure.
 - Heat reversion.
 - Carbon black content.
 - Environmental stress crack resistance (ESCR).
 - Tensile Strength and Elongation.
- Quality Come First : Each batch is tested for stringent quality parameters, tested as per ASAE standard.

Applications

Larger diameter used as main & sub main and smaller diameter as laterals in drip / micro irrigation system

Specifications

Nominal Diameter: 10 mm to 151 mm

Working Pressure: 1.13 kg/cm² to 2.9 kg/cm²



Technical Specifications

Nominal Dia.		Inside Dia.		Min. Wall Thickness		Coil Length		Minimum Weight	
mm	inch	mm	inch	mm	inch	m	ft	g/m	lbs/ 100ft
2.9 kg/cm² (42 psi) Working Pressure									
10	--	9.90	0.39	0.533	0.021	1006	3300	16.0	1.07
13	--	12.70	0.50	0.686	0.027	914	3000	27.0	1.81
16	0.50	16.00	0.63	0.864	0.034	500	1640	43.0	2.88
20	0.75	20.57	0.81	1.092	0.043	365	1200	69.0	4.62
26	1.00	26.41	1.04	1.372	0.054	201	660	112.0	7.50
35	1.25	34.54	1.36	1.778	0.070	122	400	190.0	12.73
40	1.50	40.38	1.59	2.134	0.084	107	350	266.0	17.82
52	2.00	51.99	2.04	2.743	0.108	76	250	441.0	29.55
1.45 kg/cm² (21 psi) Working Pressure									
26	1.00	26.41	1.04	0.660	0.026	506	1660	52.0	3.48
35	1.25	34.54	1.37	0.864	0.034	244	800	90.0	6.03
40	1.50	40.38	1.60	1.016	0.040	183	600	123.0	8.24
52	2.00	51.99	2.05	1.295	0.051	137	450	203.0	13.60
77	3.00	77.16	3.03	1.930	0.075	61	200	448.0	30.01
101	4.00	101.37	3.99	2.540	0.100	40	131	775.0	51.92
1.13 kg/cm² (16 psi) Working Pressure									
151	6.00	151.30	5.95	2.760	0.108	30	100	1250.0	83.75

Note: Inside Diameter based Hose.

Ordering Specifications

OH	X		XXX		XXX		MXXX	
	O - Outer dia. based hose	I - Inner dia. based hose	Nominal diameter in mm		Min. wall thickness in inch x 1000		Standard coil length in meter	

Example: OHI016034M500 - This code refers to Jain Oval Hose of nominal diameter 16 mm having wall thickness 0.034" with standard coil length of 500 m.

Note:

- Please refer standard specification table while ordering.
- On request, Jain Oval Hose can be supplied in any other length than standard coil length.