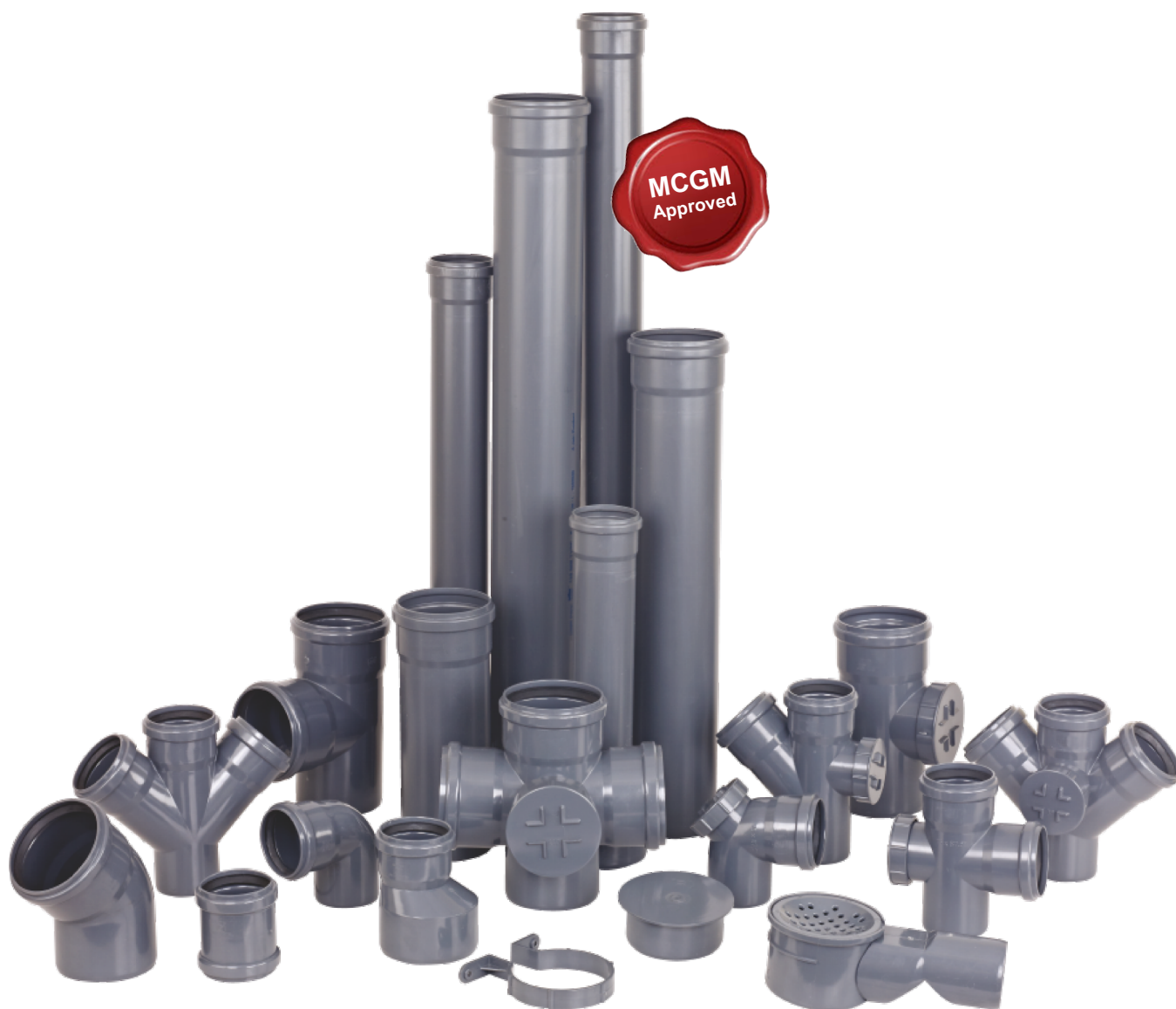


SWR Pipes and Fittings

CPVC | UPVC | UDS | HSC




Jain Irrigation Systems Ltd.
Small Ideas. Big Revolutions.®

IS : 13592 : 2013



CM/L-7688608
Pipes

IS : 14735 : 1999



CM/L-7726788
Fittings

India's largest Polymer processors

Product Features :

- ◆ Smooth inner surface.
- ◆ Uniform wall thickness.
- ◆ Lightweight & strong.
- ◆ UV Stabilized-Weather resistant.
- ◆ High quality Standard.
- ◆ EPDM rubber link joint.
- ◆ Non corrosive.
- ◆ Easy to install.
- ◆ Durable, Long life & Economical.
- ◆ Maintenance Free

Dimensions of Pipes (All dimensions are in mm)

Nominal outside diameter (D) mm	Tolerance on outside diameter mm	Wall Thickness Type-A(A)mm		Wall Thickness Type-B(A)mm		Wall Thickness (Nonstandard)(t)mm	
		min	max	min	max	min	max
75	+0.3	1.8	2.2	3.2	3.8	1.4	1.6
90	+0.4	1.9	2.3	3.2	3.8	-	-
110	+0.4	2.2	2.7	3.2	3.8	1.5	1.65
160	+0.5	3.2	3.8	4.0	4.6	2.7	3.2

Double Socketed pipe as per requirements are also available.

Maximum Support Distance In Meters

Size in mm	75	90	110	160
No. of Joints/kg.	0.75	0.9	1.1	1.6
Vertical	2.00	2.00	2.00	2.00

Consumption of Rubber Lubricant

Size in mm	75	90	110	160
No. of joints / kg.	500	400	300	200

Product Specification :

SWR Pipes

- ◆ Pipes are available from 40mm to 160mm OD
- ◆ Available in Rubber Ring and Solvent type Joint
- ◆ 160mm also available in Clip-ring Joint
- ◆ TYPE A - Used for Ventilation & Rain-water System.
- ◆ TYPE B - Used for Soil & Waste Discharge System
- ◆ Various lengths from 0.6 m. to 6.0 m. available on request

IS : 13592



CM/L-7688608

SWR Fittings

- ◆ Fittings are available in 75,90,110 &160mm OD
- ◆ Available in Rubber Ring and Solvent type Joint
- ◆ 160mm also available in Clip-ring Joint
- ◆ Also Conforming to DIN : 19531/19534
- ◆ Available both in Solvent Cement & Rubber Ring Joints.

IS : 14735



CM/L-7726788

uPVC SWR Pipe Properties

Sr. No.	Property	Test Method	Value	Unit
1	Longitudinal Reversion	IS12235 (Part 5)	+/- 5.0 %	
2	Stress Relief Test (For Socketed Pipes)	IS 12235 (Part 6)	Shall not show blisters, excessive delamination, crack or sign of weld line splitting	
3	VST	IS 12235 (Part 2)	Min. 79	oC
4	Effect Of Sunlight for 1600 hrs.	13592 : 2013	Difference in tensile strength shall be less than 20%	
5	Resistance to Sulphuric Acid	IS 12235 (Part 7)	Change in mass shall be within limit	
6	Tensile Strength Yield at 27 ± 2oC	IS 12235 (Part 13)	45	MPa
7	Impact Strength	IS 12235 (Part 9)	Maximum 10%	TIR
8	Axial Shrinkage at 90oC water bath (for Type B pipes)	IS 13592 : 2013	<2 %	
9	Water Tightness Of Joint	IS 13592 : 2013	0.05	MPa
10	Resistance to Dichloromethane	IS 12235 (Part 11)	Shall not attack	
11	Opacity	IS 12235 (Part 3)	< 0.2%	
12	Burning Rate	ASTM D635	Self-Extinguishing	
13	Flammability Rating	UL 94	94 V-0	

Fitting's Range :



Bend 87.5°



Door Bend 87.5°



Door Bend 87.5° LHS



Bend 45°



T



Single T with Door



Reducing T with Door



Door Tee 87.5° LHS



Reducing T with Door lhs



Reducing T



Cross Tee



Cross Tee with Door



Y



Y with Door



Reducing Y



Reducing Y with Door



Double Y



Double Y with Door



Coupler



Eccentric Reducer

Fitting's Range :



Nahani Trap with Jali



Nahani Trap Jali



Nahani Trap without Jali



Nahani Trap with Strainer



Strainer



P Trap long



P Trap Short



S Trap



Q Trap



Gully Trap



**Multi Floor Trap
with strainer**



**Multi Floor Trap
without strainer**



Cleansing Pipe



Single T Syphon with Door



Passover



Pipe Clamp Plastic



Vent Cowel



**WC 18"connector
with lip ring**



Rubber Lubricant



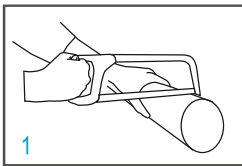
Solvent Cement

Key Guidelines :

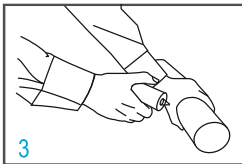
- ◆ Always use Rubber Lubricant for joining Rubber Ring Joint SWR Pipe and Fittings.
- ◆ Do not use uPVC Pressure Pipe with Solvent Cement Jointing for exterior since they turn brown and become brittle.
- ◆ Do not over tight door caps. Place properly Rubber Rings before tightening.
- ◆ Use Solvent Weld SWR PVC Pipe & Fittings for horizontal lines sewerage conveyance and leakages should be tested before plastering.
- ◆ Always maintain a gap of approximate 10mm between all Pipes & Fittings to allow contraction & expansion i.e. to accommodate thermal expansion.
- ◆ All SWR Pipes should be Square Cut.
- ◆ Vertical SWR Pipe stacks should be properly aligned and always use correct spacing of pipe clips.
- ◆ SWR Pipe & Fitting leakages should be tested by test plug and socket plug. Avoid smoke testing.
- ◆ All entry to main stacks should be protected with water seal trap, wherever there is mixing of Soil and Waste Lines.
- ◆ For further technical information, please contact us.
- ◆ Alternate socket positioning on a level ground.

Installation Procedures :

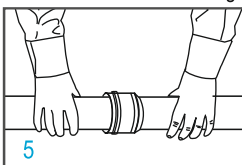
Rubber Ring Joints :



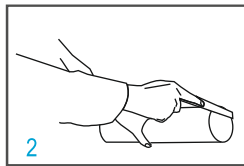
1
Cut pipe square to the required length.



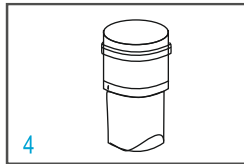
3
Apply lubricant on the external surface of the pipe and on the elastomeric ring.



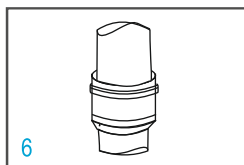
5
Push the pipe into the socket.



2
Chamfer the edge of the pipe. Remove all burrs, dust and dirt.

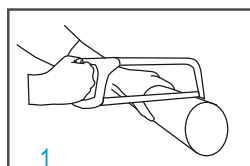


4
Make sure the sealing ring is placed Correctly in the groove.

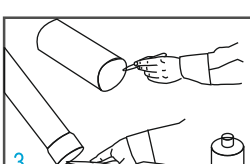


6
Ensure 10 mm gap between the pipe end and the socket register for thermal expansion and contraction.

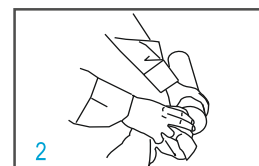
Solvent Welded Joint :



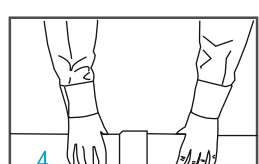
1
Cut pipe square to the required length.



3
Apply solvent cement uniformly on the inner surface of fitting and outer surface of pipe



2
Remove all burrs & grease if any, from the internal & external surfaces



4
Insert the pipe end in to socket end & push it fully in. turn around pipe for 45°, wait for curing time.



Always use **Jain's Perma-Fix** Solvent Cement for better Bonding Performance.



Stringent quality control, assurance & testing Facilities



THE COMPANY

Jain Irrigation Systems Limited (JISL), has an unmatched and enviable performance track record as a **Total Solution Provider** for various thermoplastics piping systems such as for Agriculture, Water, Gas, Telecom, Utility, Sewerage, Chemicals, Industrial Effluents, Mining, Slurry, Coal ash, SWR, Sub soil drainage, Ground water tapping, Lift irrigation, Micro irrigation & sprinkler irrigation, Hand pumps, House service Connections etc.

We are the only manufacturer of 1600 mm dia HDPE pipe and its fittings in India . We have with us more than 9000 associates worldwide and revenue of more than 60 billion rupees with manufacturing plants in 28 locations across the globe, having network of more than 3000 Distributors & Dealers worldwide.

JISL from its noble range brings to you JAIN PLUMBING CPVC Pipe and Fitting systems for all your Domestic Hot & Cold water plumbing requirements. Jain Plumbing's Solvent welded high quality CPVC Pipe & Fitting Systems are manufactured in line with major national and international standards and parameters. The main intent and effort is to provide you with high quality and sustainable plumbing solutions for a long and healthy life.

Stamp



fb.com/JainIrrigationSystems

Jain Plastic Park, P.O. Box 72, Jalgaon-425001. India. Tel: 0257-2258011; E-mail: plumbing@jains.com; Website: www.jains.com

